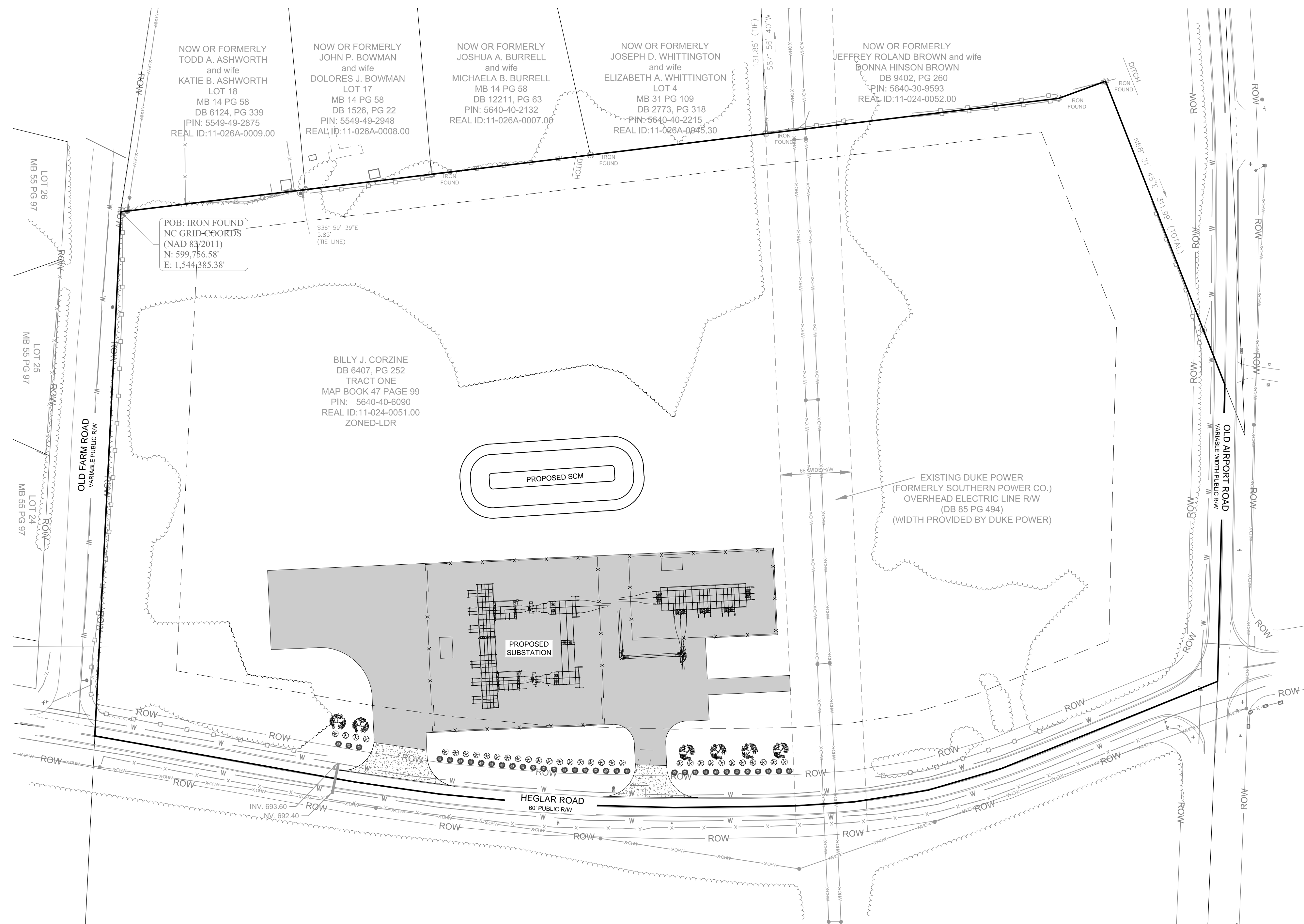


HEGLAR ROAD SUBSTATION

CONCORD, NC



VICINITY MAP
NOT TO SCALE



CONSULTING FIRM

SOUTHEASTERN CONSULTING ENGINEERS, INC.
PO BOX 240436
CHARLOTTE, NC 28224

CONTACT: JERRY FORD
PHONE: 704-523-6045

CIVIL ENGINEER

ESP ASSOCIATES, INC.
20484 CHARTWELL CENTER DRIVE, SUITE D
CORNELIUS, NC 28031

CONTACT: DAN E. BREWER
PHONE: 704-990-9428

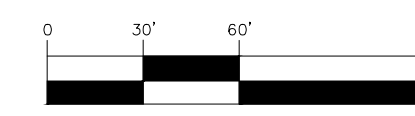
SITE INFORMATION

OWNER: CITY OF CONCORD
PROPOSED USE: SUBSTATION SITE
APPROXIMATE ADDRESS: 1920 HEGLAR RD
CONCORD, NC 28025

PARCEL #: 5640-40-6090
SITE AREA: 14.4 AC
ZONING: TR (TO BE ANNEXED AND REZONED RE OR RL)
DEED BOOK/PAGE: DB-06685 PG-262



GRAPHIC SCALE



(IN FEET)

HORIZONTAL 1 inch = 60 ft.



- 1) CONTRACTOR IS FULLY RESPONSIBLE FOR CONTACTING APPROPRIATE PARTIES AND ASSURING THAT EXISTING UTILITIES ARE LOCATED PRIOR TO BEGINNING CONSTRUCTION.
- 2) CONTRACTOR IS RESPONSIBLE FOR PLACING BARRICADES USING FLAG MEN, ETC. AS NECESSARY TO INSURE SAFETY.
- 3) ALL PAVEMENT CUTS, CONCRETE OR ASPHALT, ARE TO BE REPLACED ACCORDING TO STANDARDS OF THE NORTH CAROLINA DEPARTMENT OF TRANSPORTATION AND LOCAL MUNICIPALITIES.
- 4) SHORING WILL BE ACCORDING TO OSHA TRENCHING STANDARDS PART 1926 SUBPART F, OR AS AMENDED.

REVISIONS		
NO.	DATE	DESCRIPTION

SCALE: AS SHOWN
DATE ISSUED: 07/03/2019
DESIGNED BY: JWF
DRAWN BY: JWF
CHECKED BY: DEB
APPROVED BY: DEB



PRELIMINARY
NOT FOR
CONSTRUCTION

Electric Transmission, Distribution, & Substations
SCADA Systems; Load Management
Peak Generation; Utility Rates
GIS/Mapping

SOUTHEASTERN
Consulting Engineers, Inc.
600 Minuet Lane, P.O. Box 240436, Charlotte, NC 28224
TEL (704) 523-6045 FAX (704) 523-8317 License No.: F-0181

HEGLAR ROAD SUBSTATION

SITE PLAN EXHIBIT

PROJECT NO.:
17-59-02

ESP PROJECT NO.:
HQ10.400

1